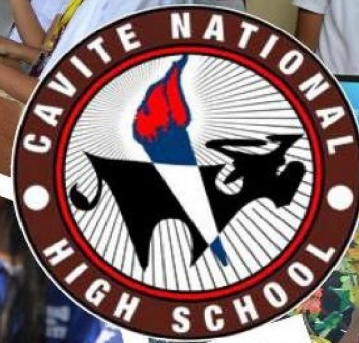




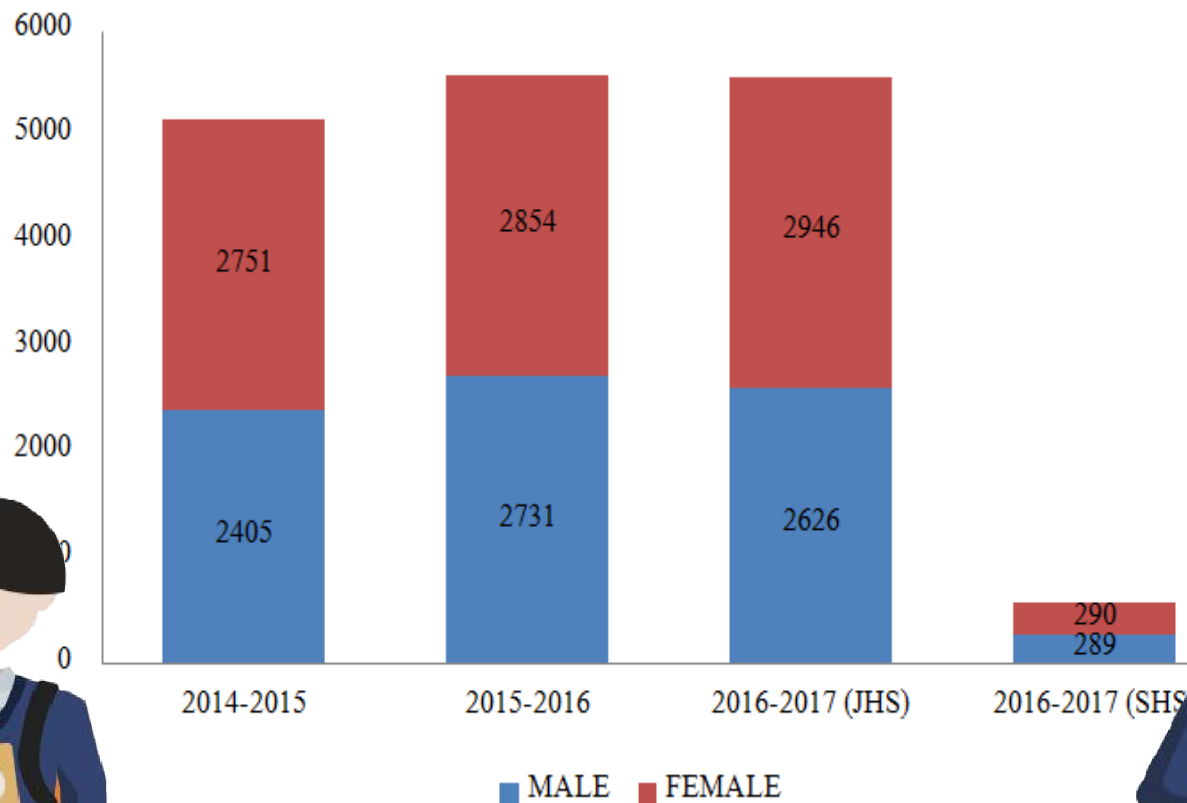
SCHOOL REPORT CARD



Cavite National High School
Chief E. Martin Street, Caridad, Cavite City 4100

A. SCHOOL PROFILE

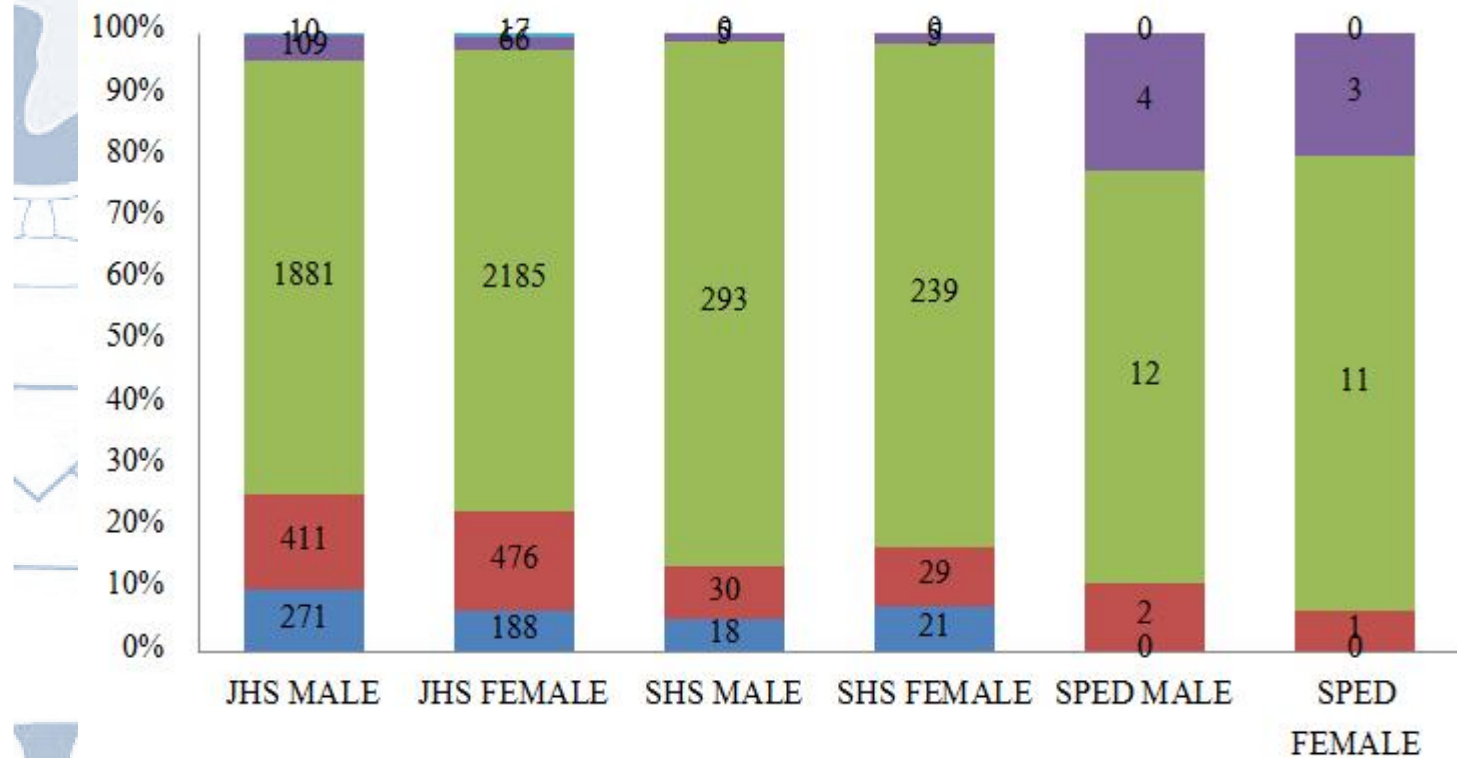
1. Enrollment



The enrolment of the school for the past three years shows an increase. Currently, the school has 6,111 learners enrolled in junior high school and senior high school programs.

2.

Health and Nutritional Status



SEVERELY WASTED

WASTED

NORMAL

OVERWEIGHT

OBESE

The medical staff of the school identified 946 wasted and 498 severely wasted learners. The identified undernourished learners underwent the feeding program of the school canteen.

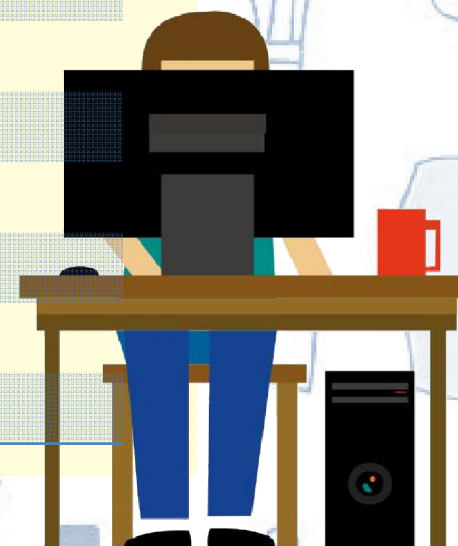


3. Learners' Materials



Subject	Excess	Shortage
Science	0	503
Mathematics	0	503
English	0	503
Filipino	0	483
Araling Panlipunan	183	0
EsP	0	503
MAPEH	0	1819

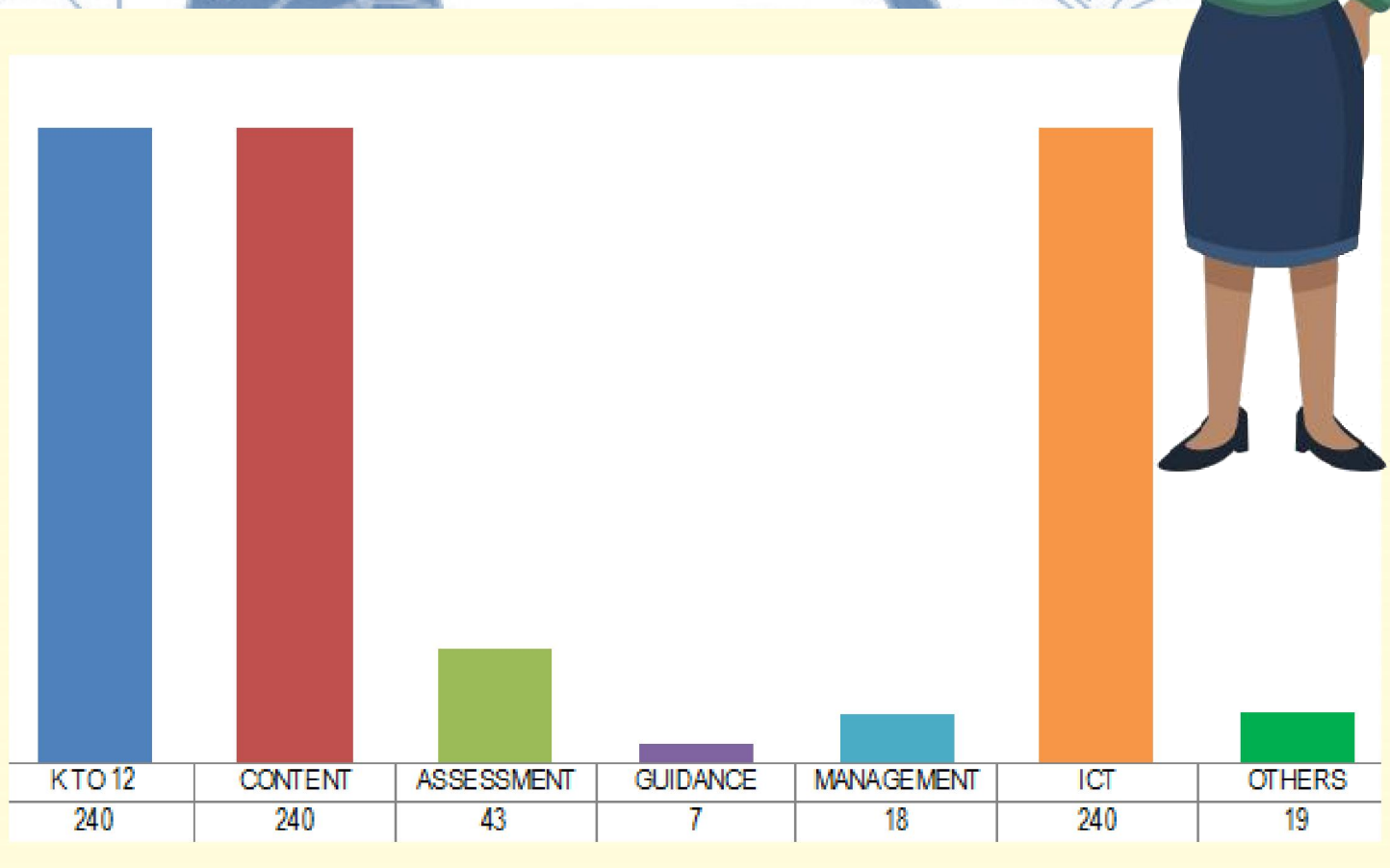
Location	Material	Number
Library	Books	4,197
	Chairs	167
	Tables	19
Computer Room/Office	Computers	34
Science Laboratory*	Microscope	22
	Autoclave	1
	Centrifuge	1



4.

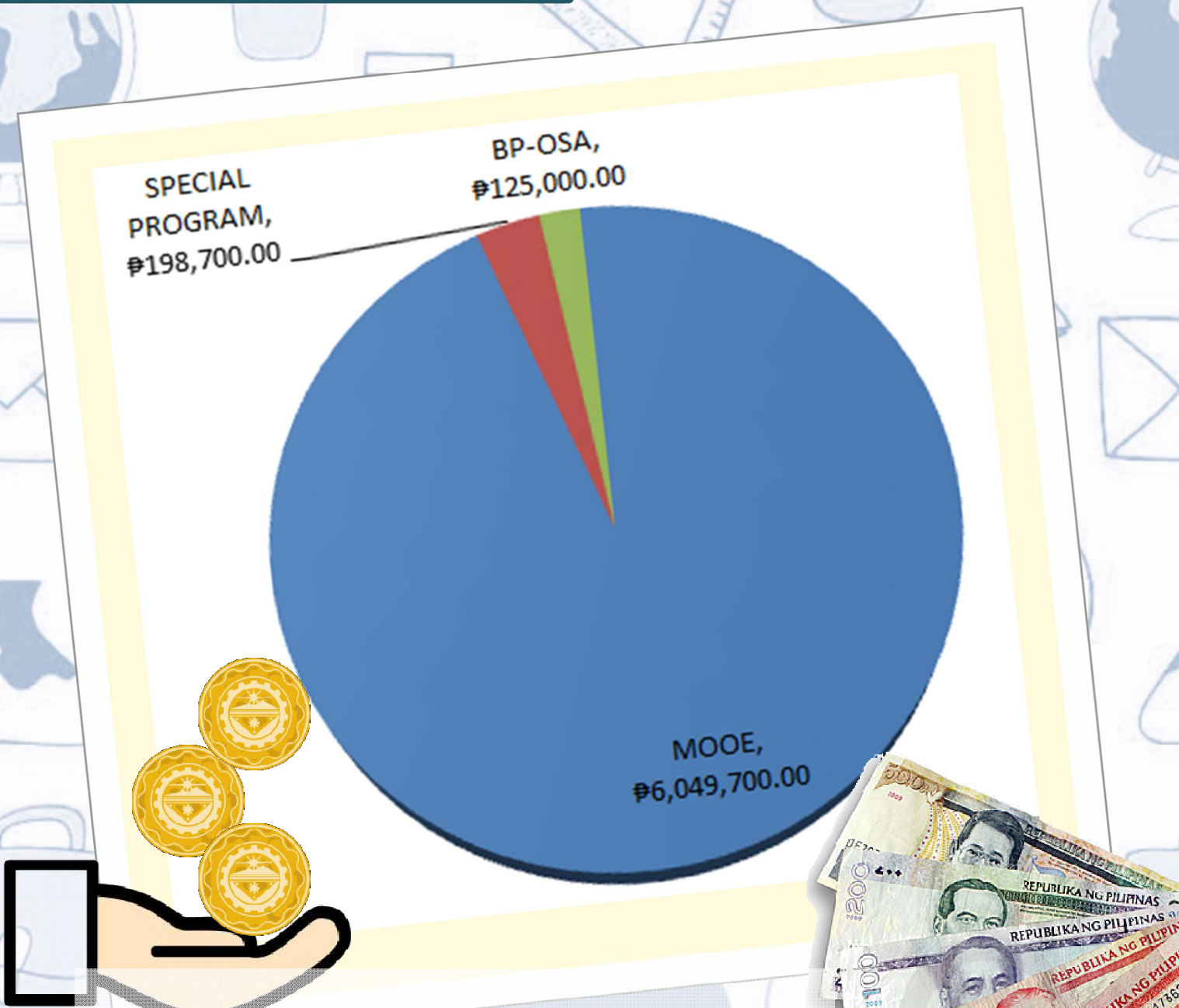
Teachers' Professional Development

The teachers undergone seminars and trainings based on the needs identified in the NCBTS- Teacher's Strength and Needs Assessment. Each learning area conducts a monthly in-service training with topic related to Information, Communication and Technology (ICT), Assessment of Learning, and Curriculum.



5.

Funding Sources



*The biggest source of school funding come from the MOOE.
Other sources are canteen fund and donors.*

6. School Awards and Recognitions



Title of Award	Award Giving Body	Level	Category of Award
Third Place, Page Design	Regional Schools Press Conference (DepEd Region IV-A CALABARZON)	Region	Student
Third Place, Science Quiz Bee for Teachers	Regional Science and Technology Fair and Congress 2015 (DepEd Region IV-A CALABARZON)	Region	Teacher
Champion, Biotechnology Infomercial (SiHay Congress 2016)	University of the Philippines Los Banos	National	School

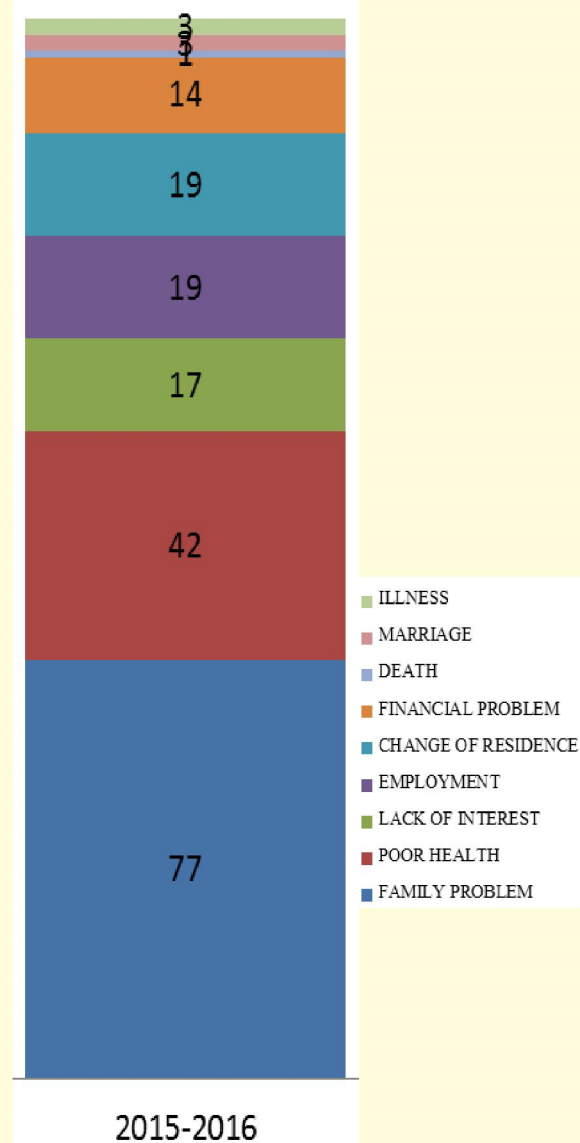
B. PERFORMANCE INDICATORS: ACCESS

7. Number and rate of dropouts by cause

In terms of drop-out rates of the school for the past three years, an increase in the number of leaving the school was observed from 2013 to 2016. The primary reasons for the dropping of students include family problem and financial difficulties.



2013-2014 2014-2015 2015-2016

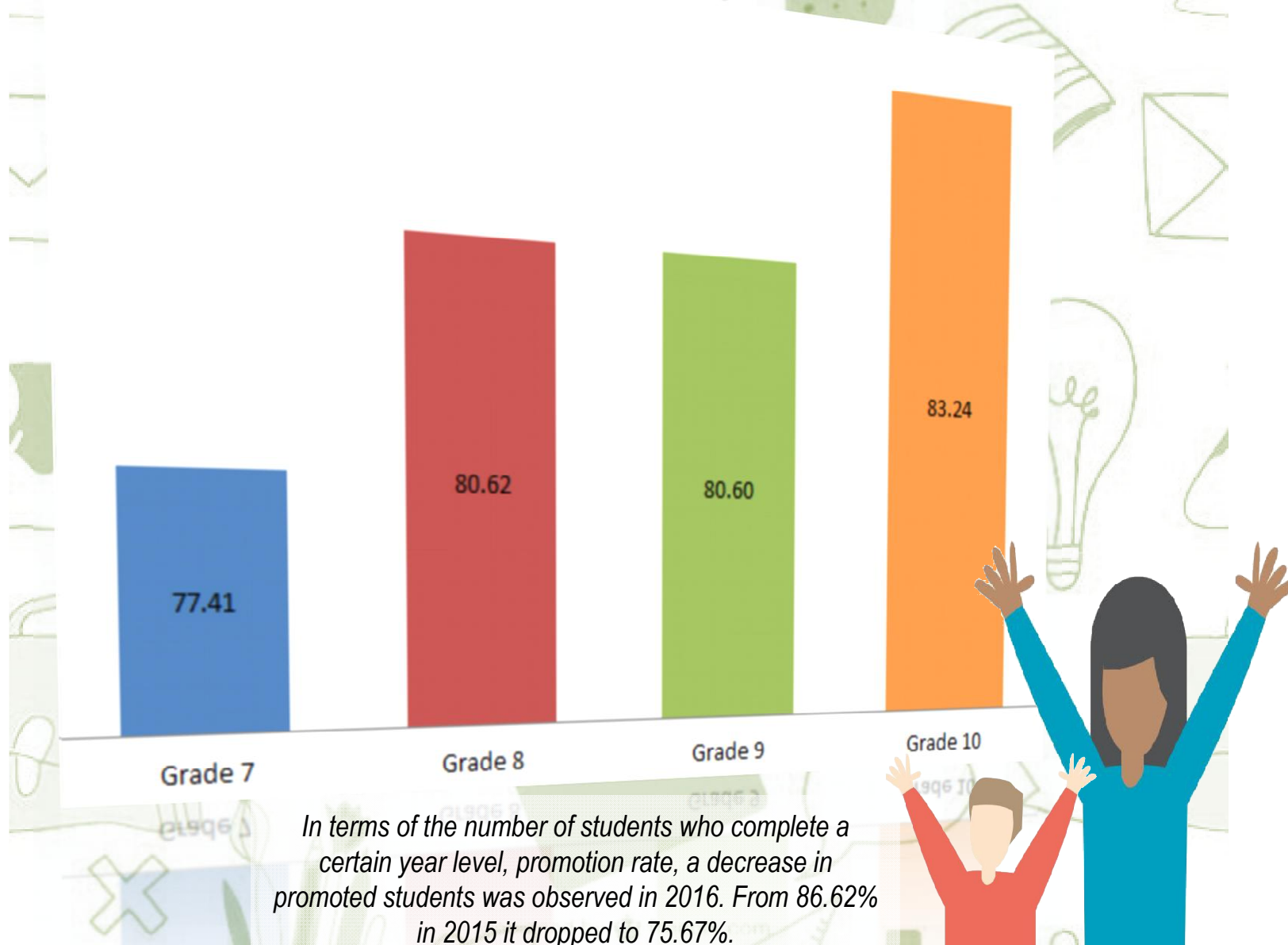


C.

PERFORMANCE INDICATORS: QUALITY

8.

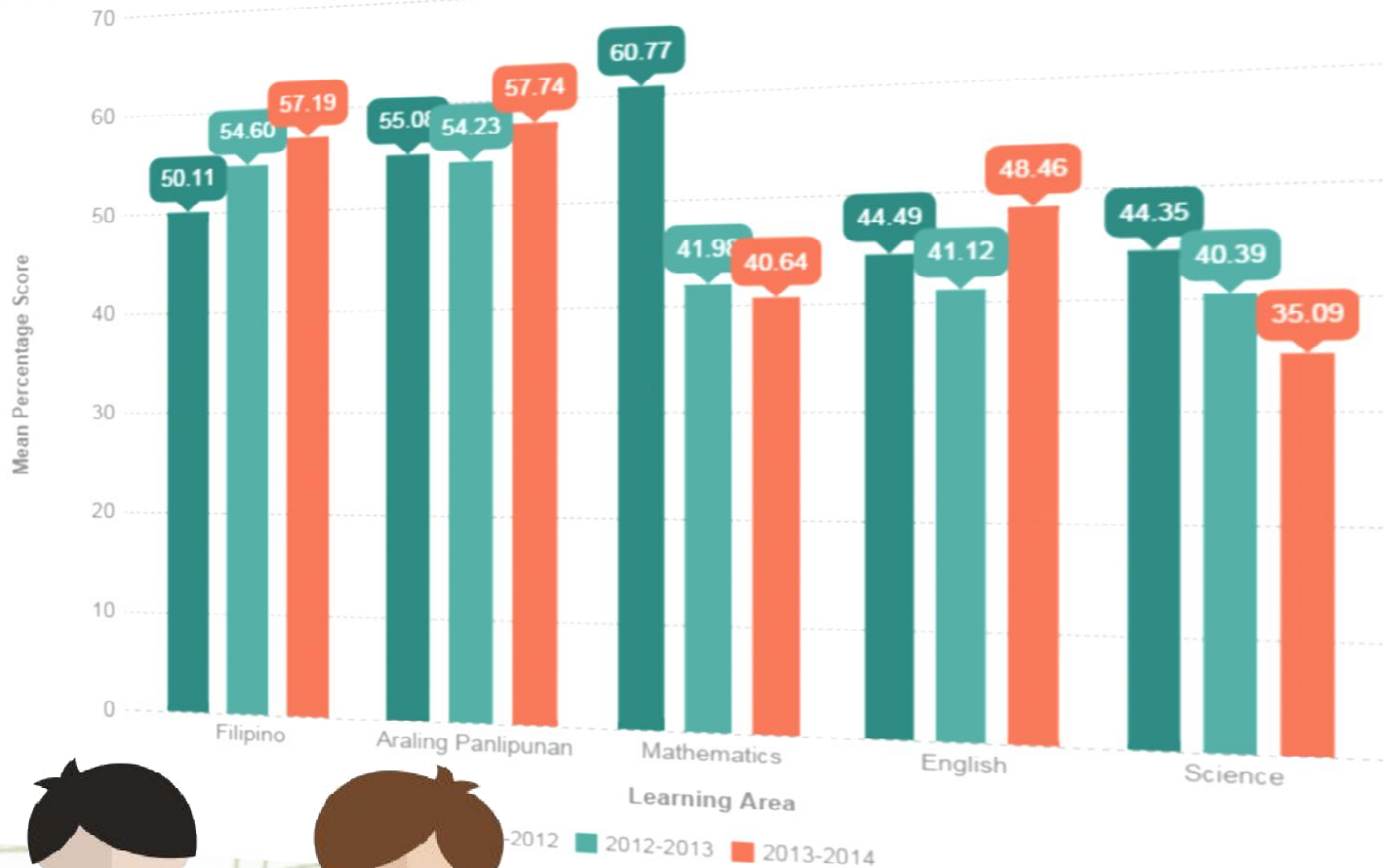
Percentage of learners who completed the school year (Promotion Rate)



In terms of the number of students who complete a certain year level, promotion rate, a decrease in promoted students was observed in 2016. From 86.62% in 2015 it dropped to 75.67%.

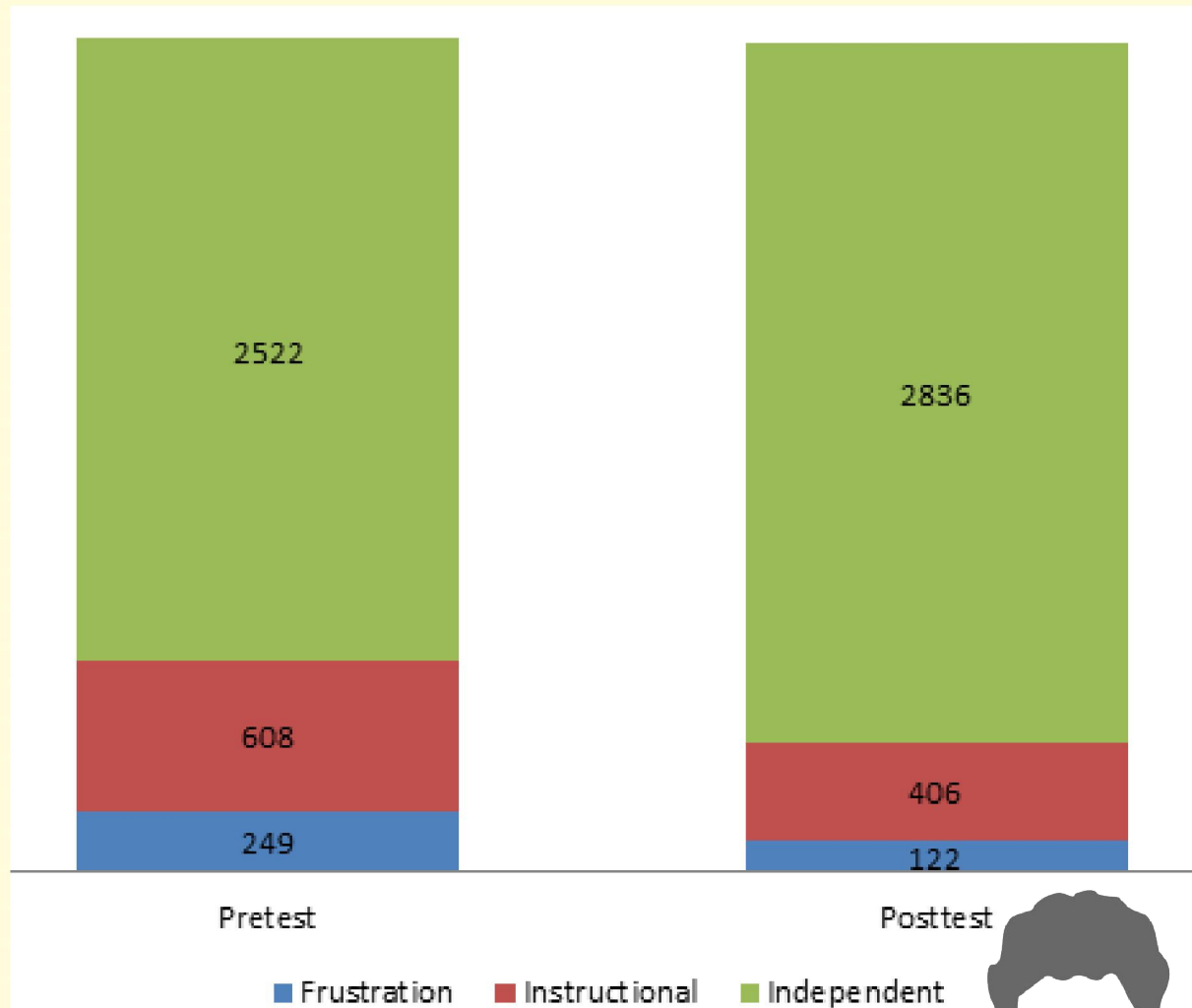
9.

National Achievement Test (NAT)- by Mean Percentage Score (MPS)



There is no available data for the mean percentage score (MPS) in National Achievement Test for the last two years. The MPS in all learning areas was below the standard of 75%.

10. Literacy Level



In terms of literacy in English and Filipino in the current school year, frustrated readers still exist in all the grade levels. The Project Book-lat, school-based reading program, is the existing project of the school to address this need to increase the literacy level of identified frustrated readers.



D.

PERFORMANCE INDICATORS: GOVERNANCE

11.

School-Based Management Assessment Level

SBM Level

1

Qualitative
Interpretation
Developing

12.

Child-Friendly School Survey Result

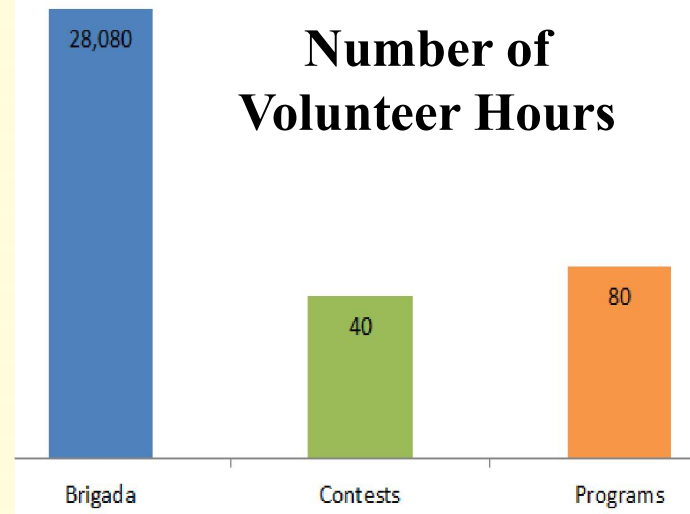
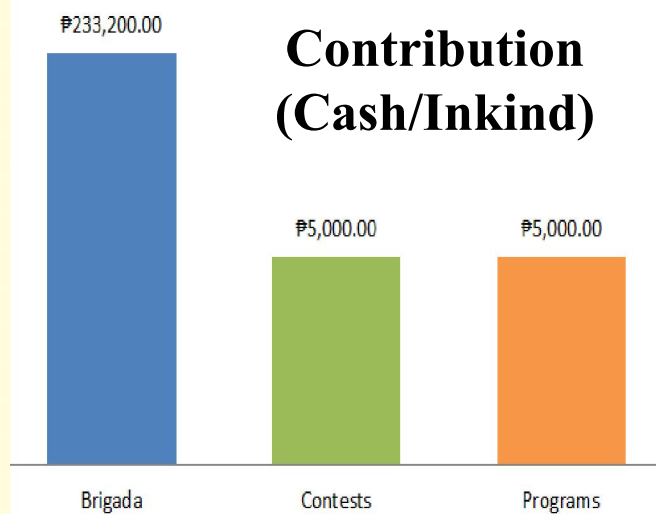
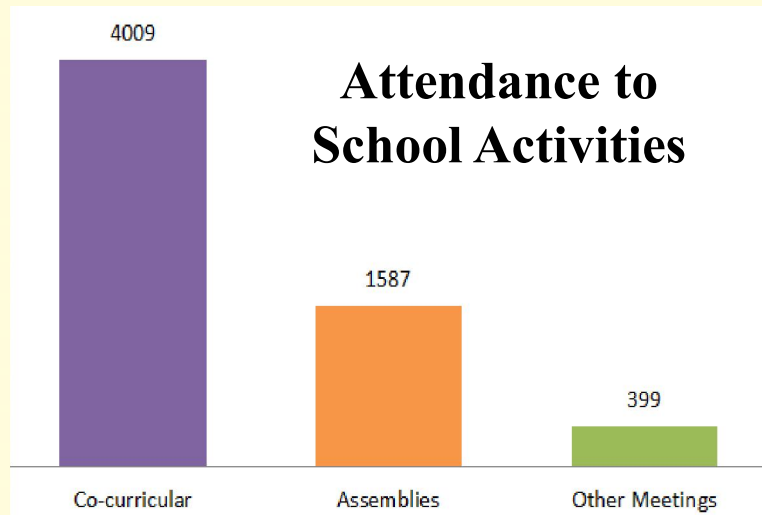
CFSS Points:

29

Qualitative
Interpretation
CHILD-
FRIENDLY

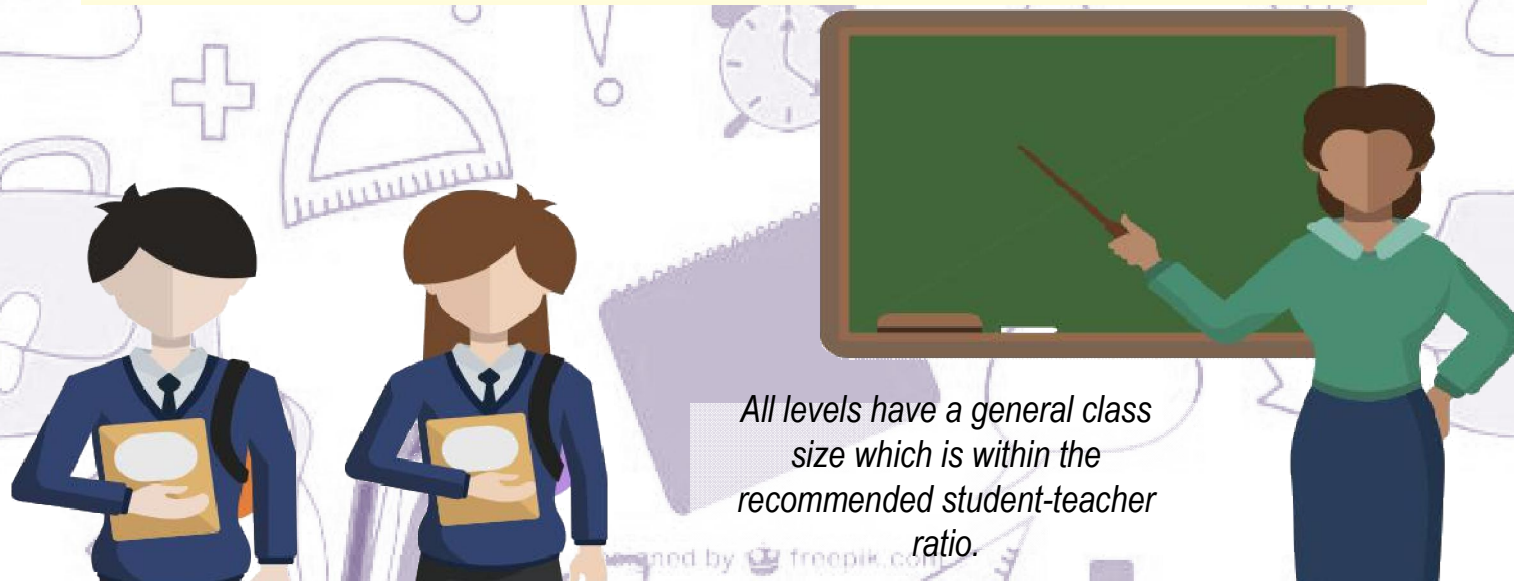
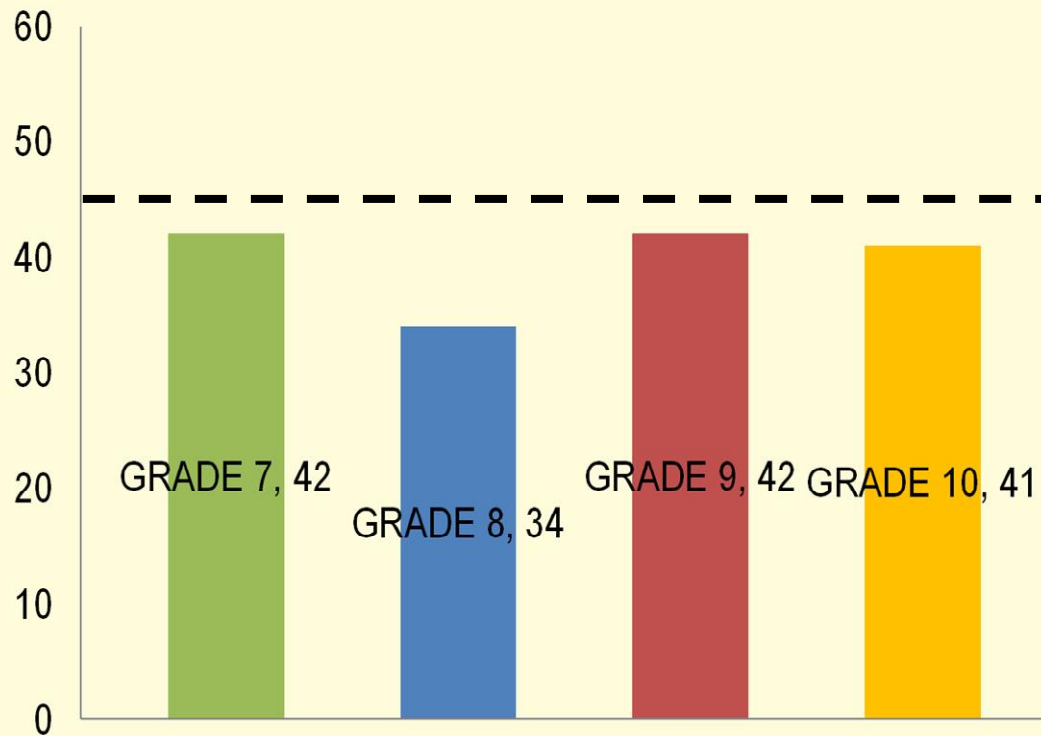


13. Stakeholders' Participation



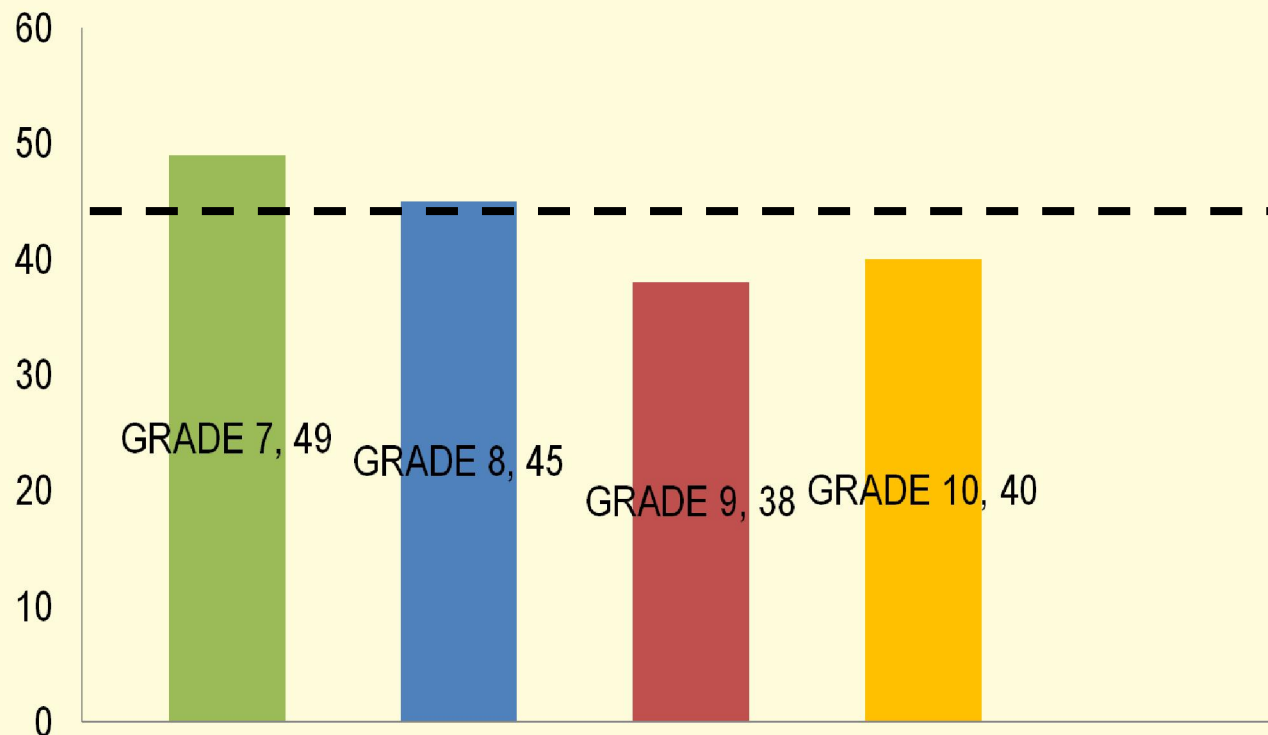
Stakeholders have shown notable participation in the numerous undertaking the school. Participation in extra-curricular activities shall be strengthened in the next implementation of activities

14. Learner-Teacher Ratio

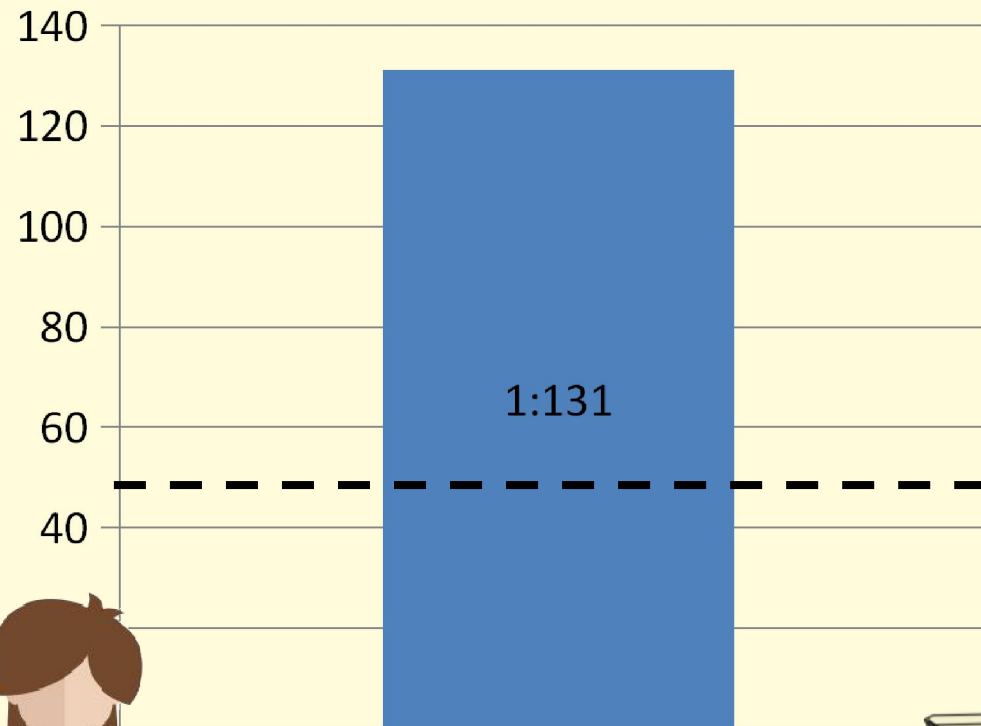


15. Learner-Classroom Ratio

Except for Grade 7 and 8, all levels have a general class size which is within the recommended proportion.

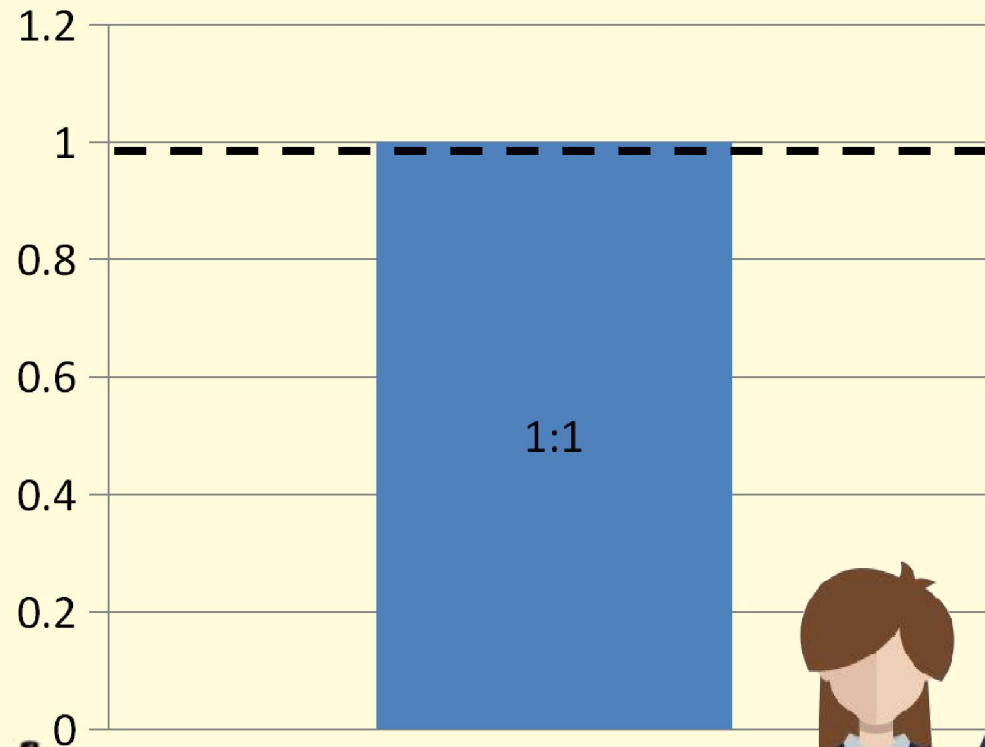


16. Learner-Toilet Ratio



The number of toilets is not enough to accommodate all the students. More toilets should be constructed and maintenance of its cleanliness should be observed.

17. Learner-Seat Ratio



There are currently enough seats for all the students

E. PROJECTS

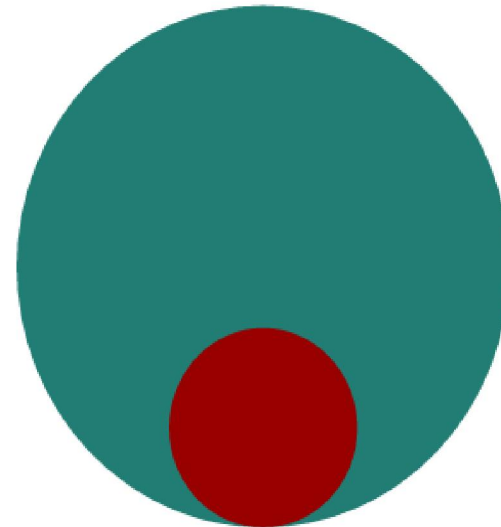
18. Status of Continuous Improvement (CI) Projects

Cause and Effect



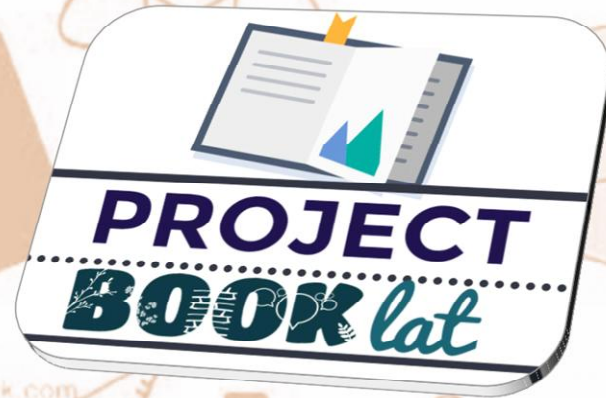
■ Met expectation (85%) ■ Did not meet expectation (15%)

Post Test



■ Met expectation ■ Did not meet expectation

February 29-March 4, 2016
171 out of 196 were able to
pass the Post Test for
Reading



19. Other Stakeholders' Accomplishments



Various alumni associations extended their help to the school through facilities improvement, teaching equipment, and scholarship programs.

